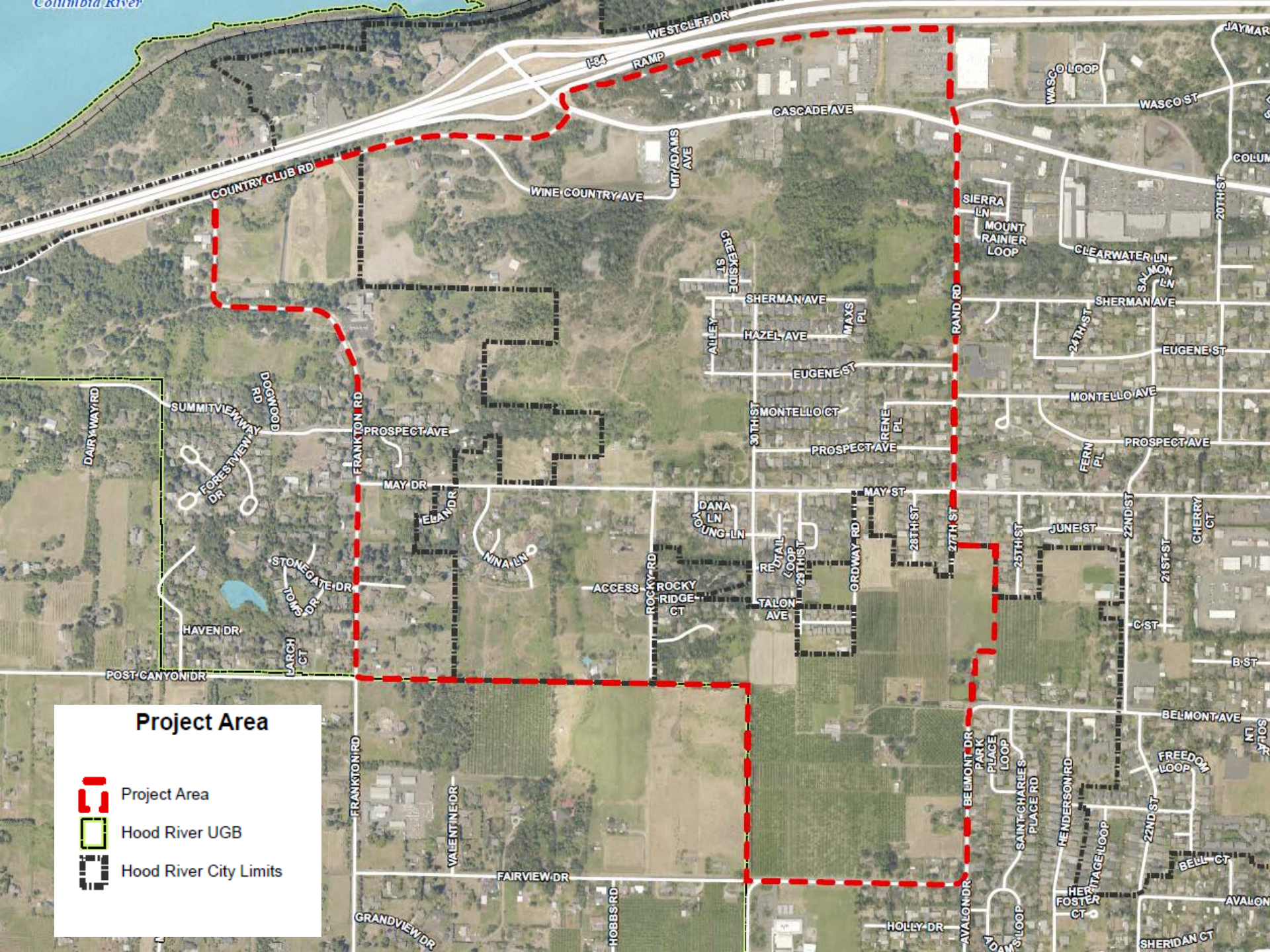







Advisory Committee Meeting

October 5, 2016

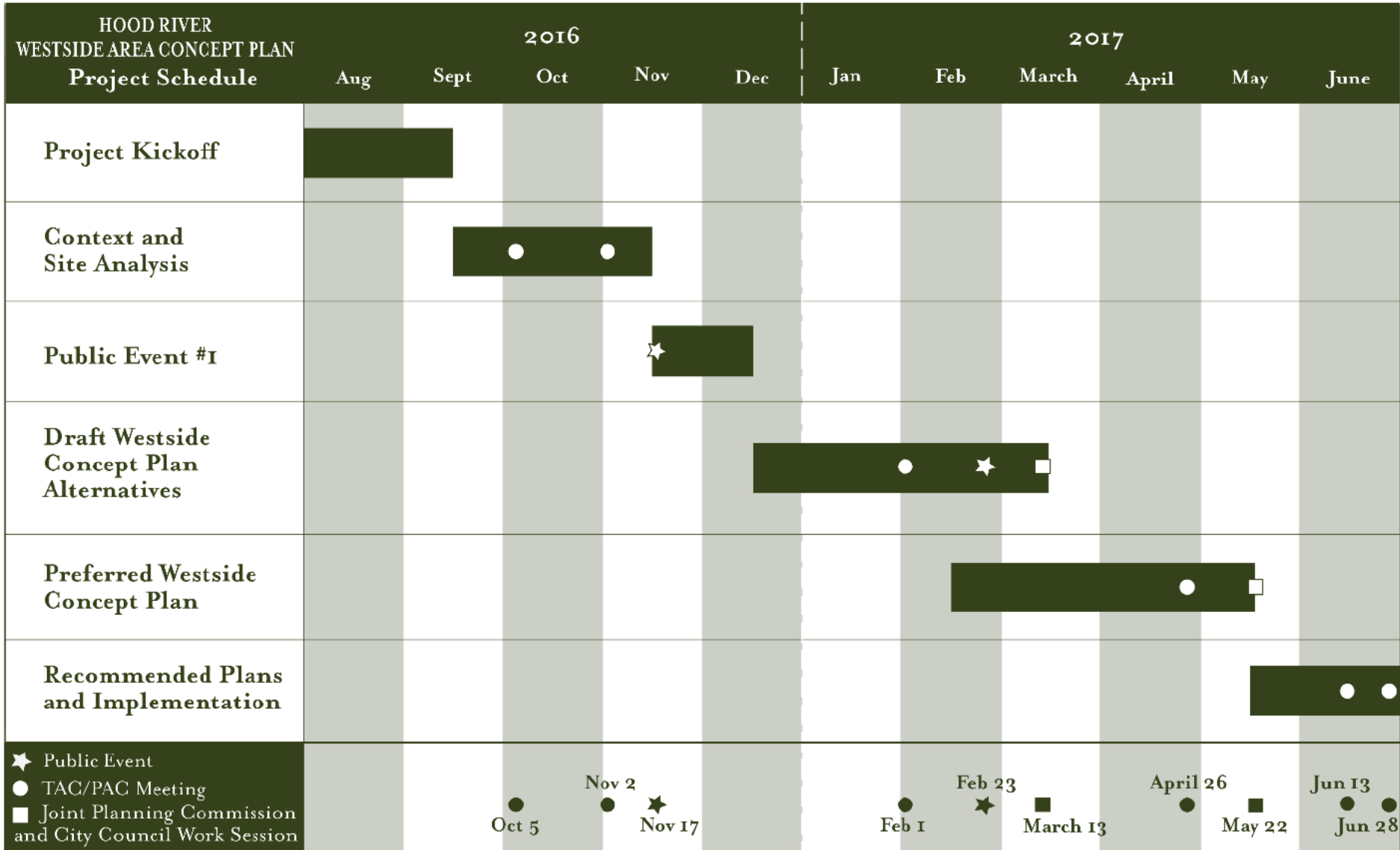


Project Area

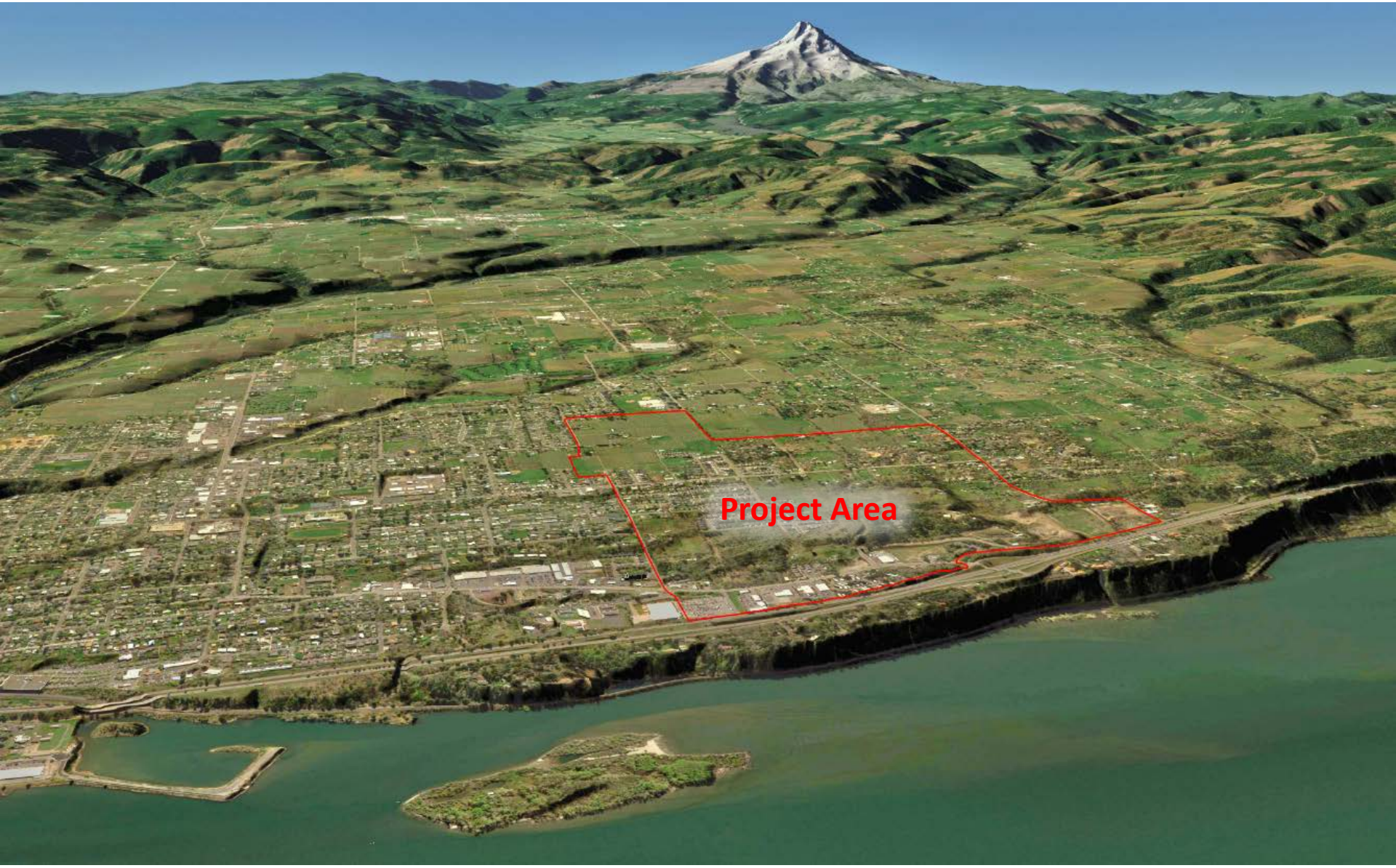
-  Project Area
-  Hood River UGB
-  Hood River City Limits



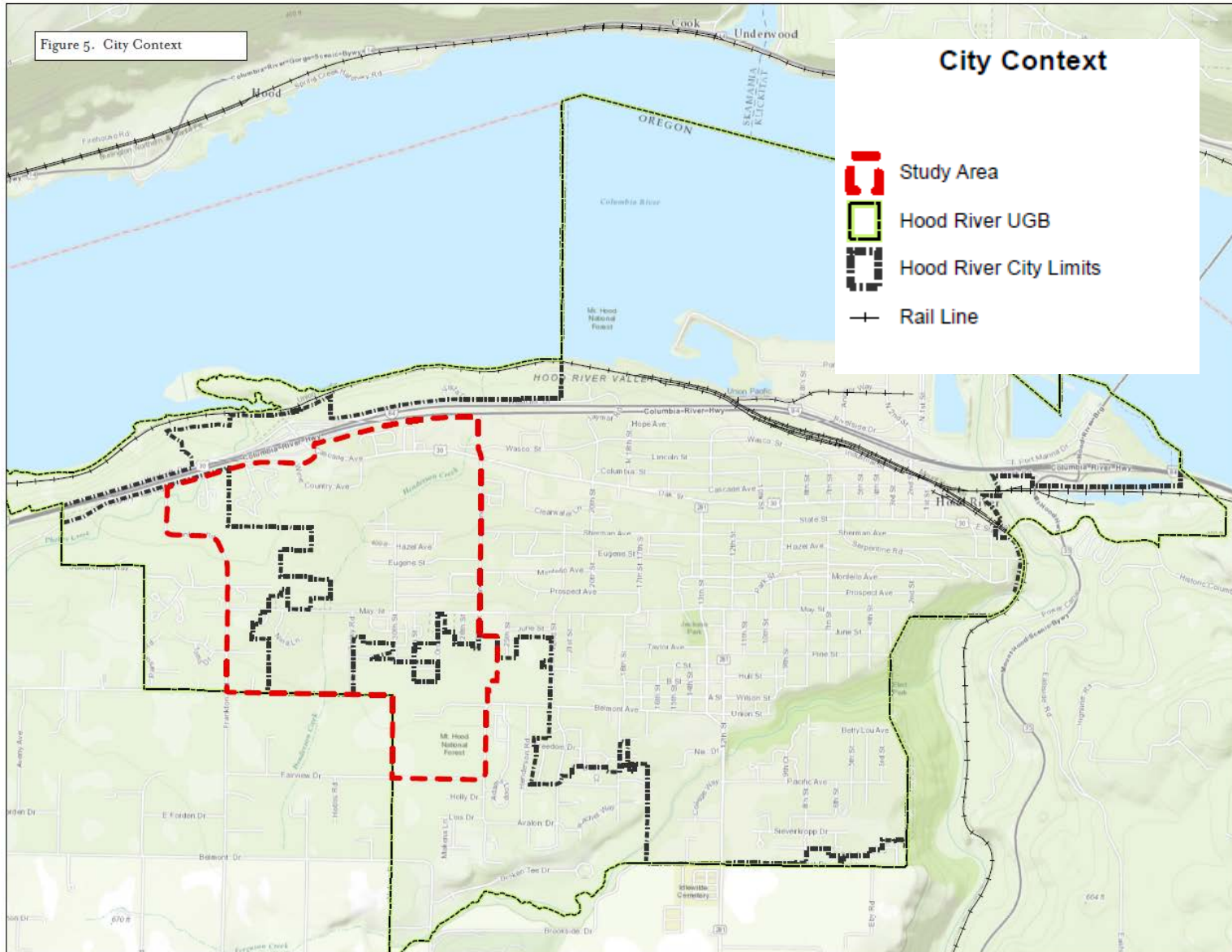
Project Schedule



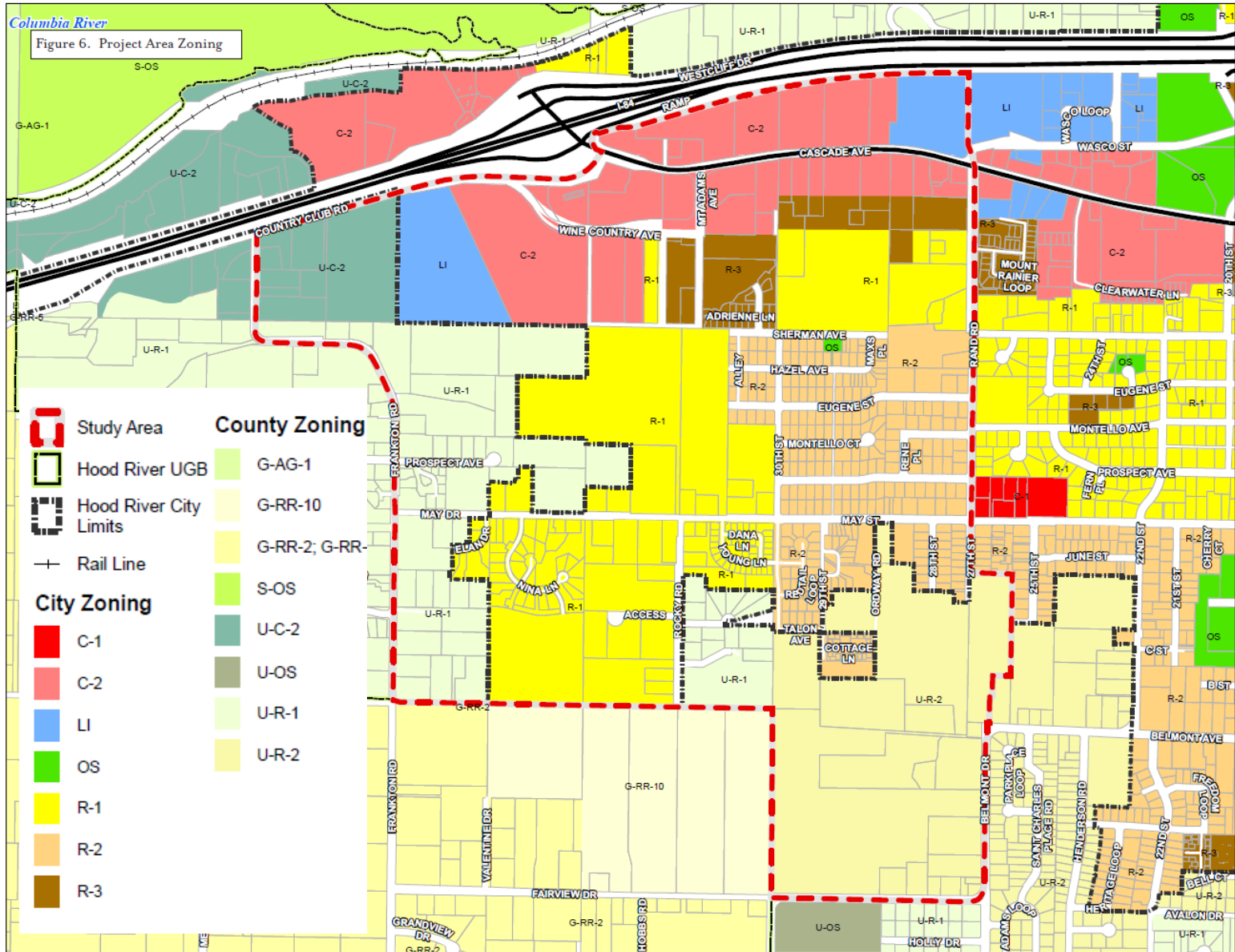
Landscape Context



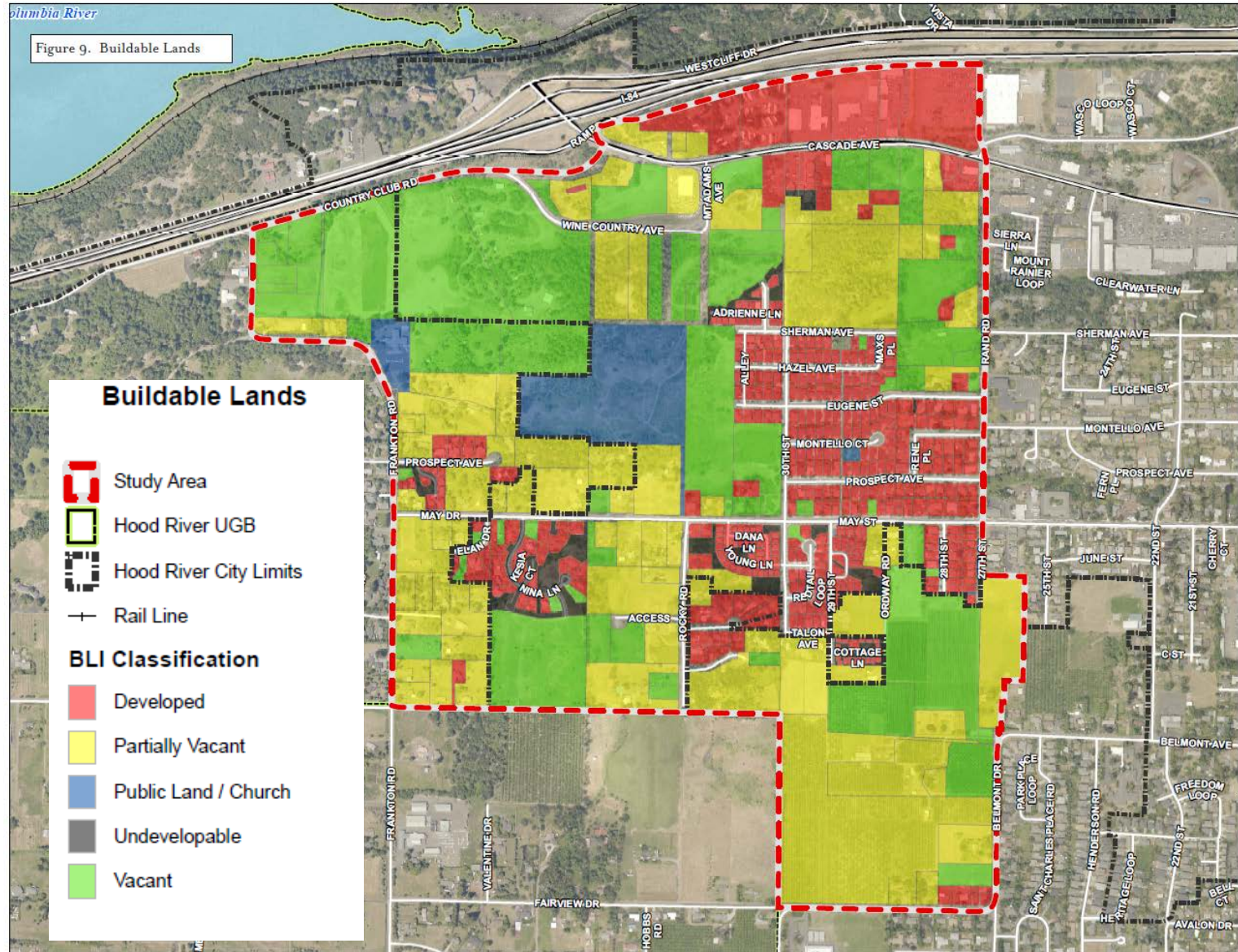
City Context



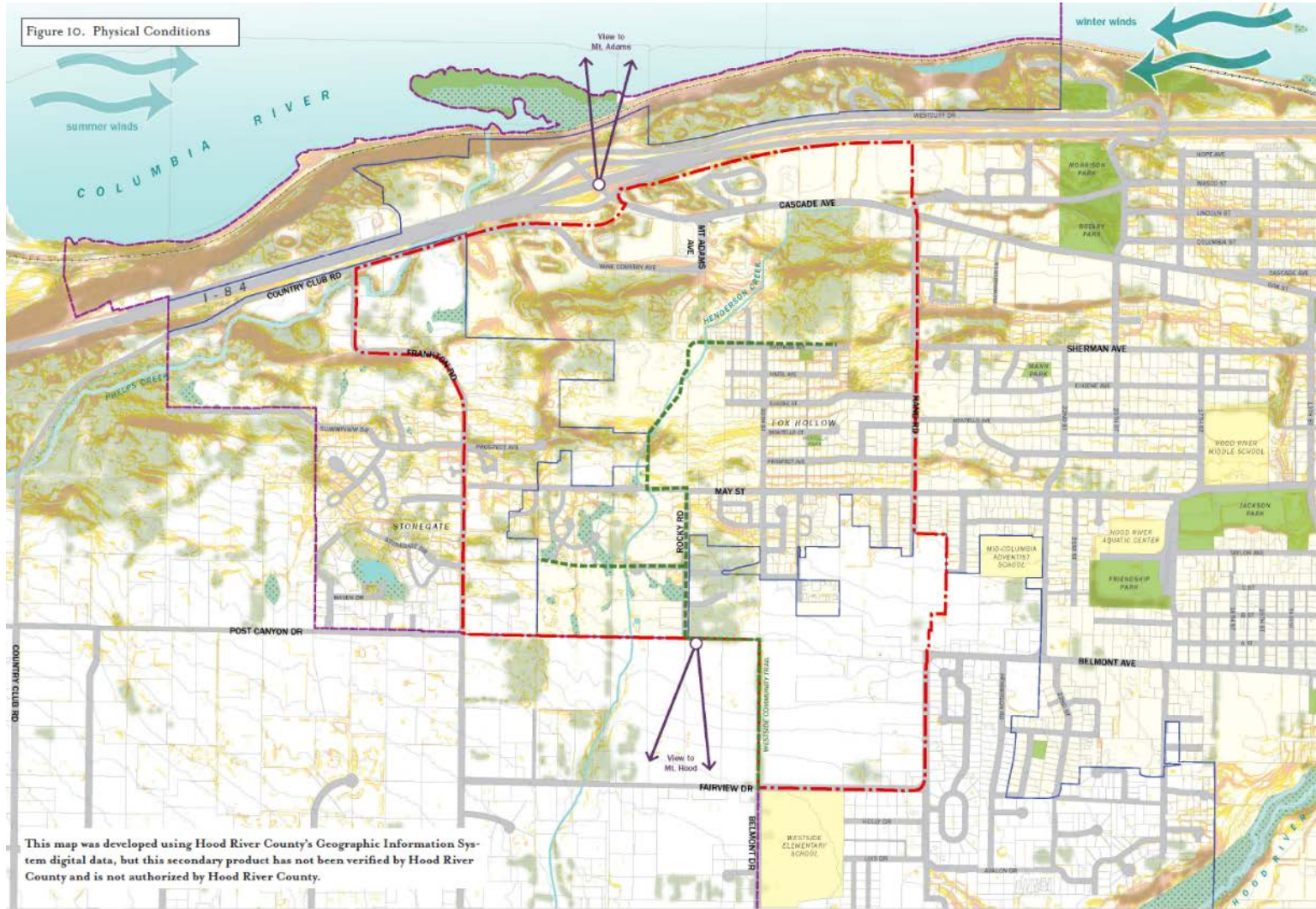
Opportunities and Constraints



Opportunities and Constraints

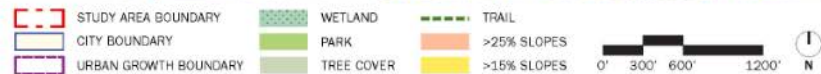


Opportunities and Constraints



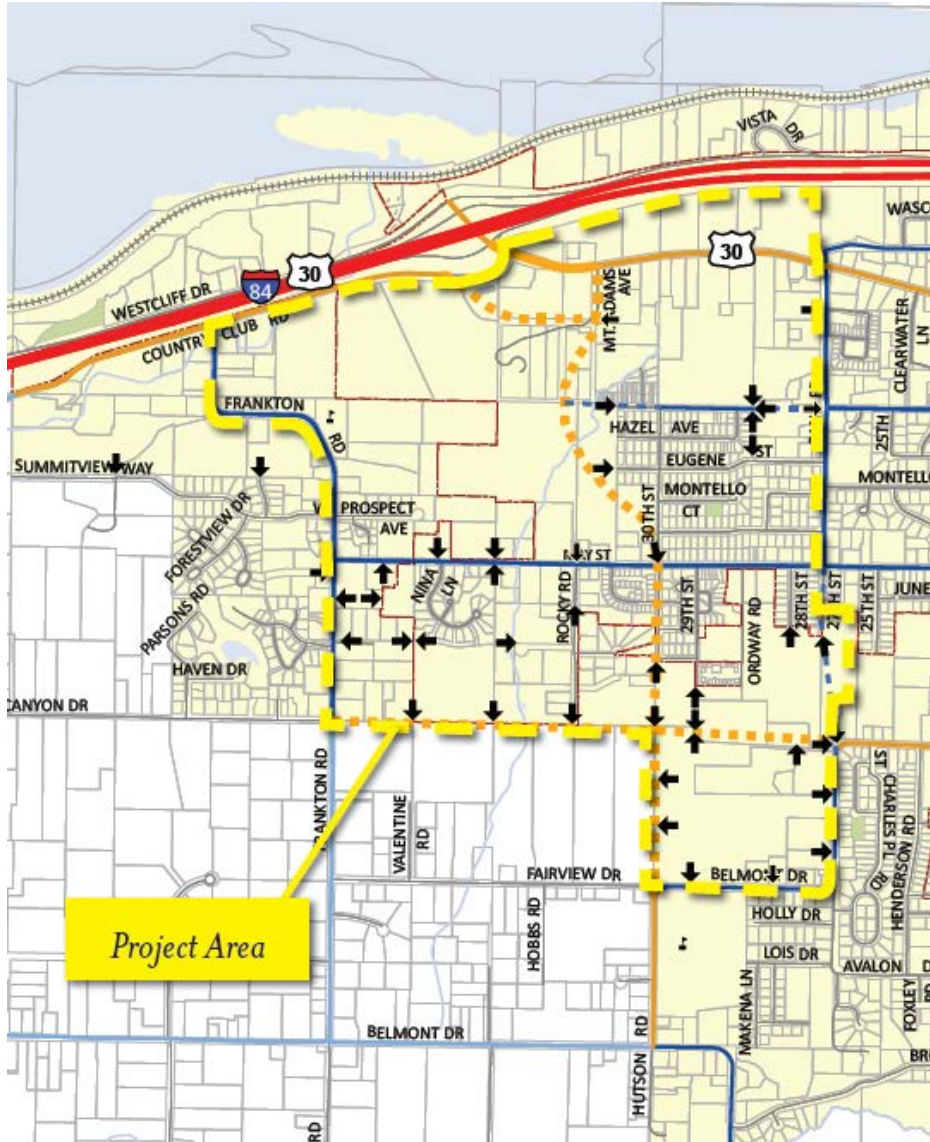
PHYSICAL CONDITIONS

HOOD RIVER WESTSIDE AREA CONCEPT PLAN





Opportunities and Constraints



Legend

Proposed Roadway Classification

- Major Arterial
- Minor Arterial
- Urban Collector
- County Collector
- Local

Future Extension, Functional Classification

- - Major Arterial
- - Minor Arterial
- - Urban Collector
- - County Collector
- - Local

- ➔ Potential Local Street Connection

- Civic/Government

- ⬭ City Limits

- Parks

- - - - Railroad

- ⚡ Schools

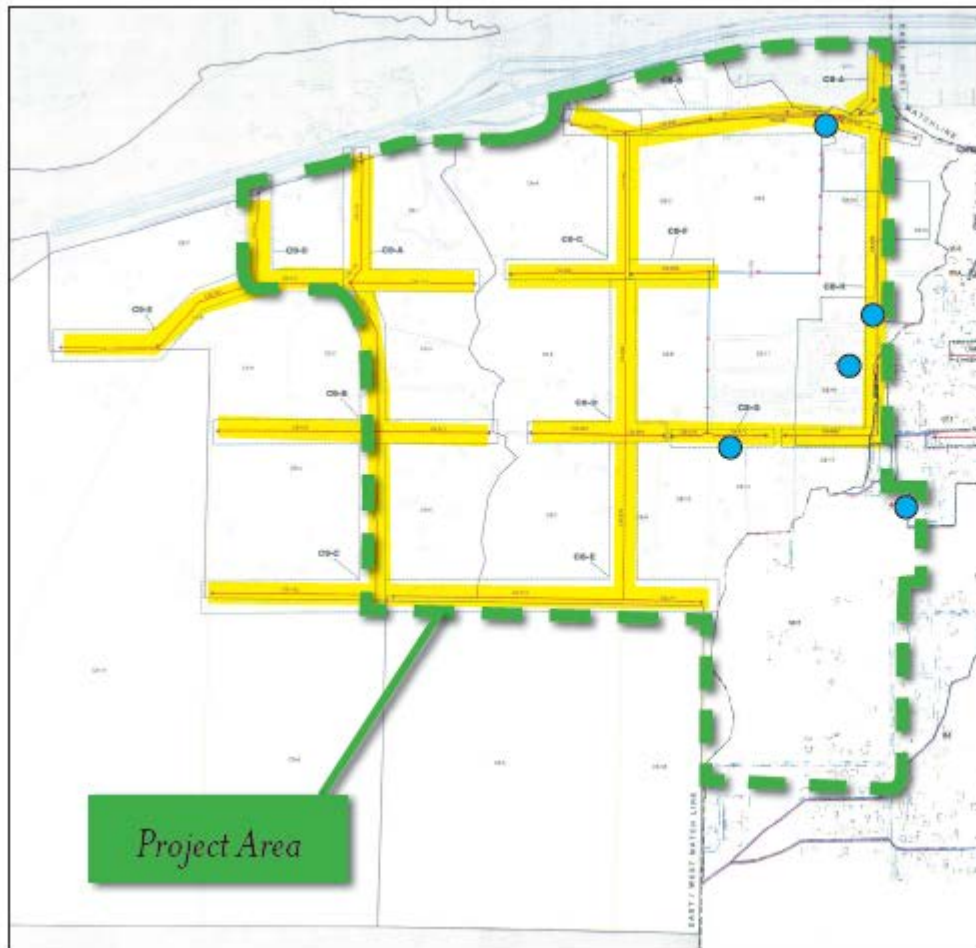
- Streams



- Waterbodies

- ⬭ Parcels

- UGB

Opportunities and Constraints

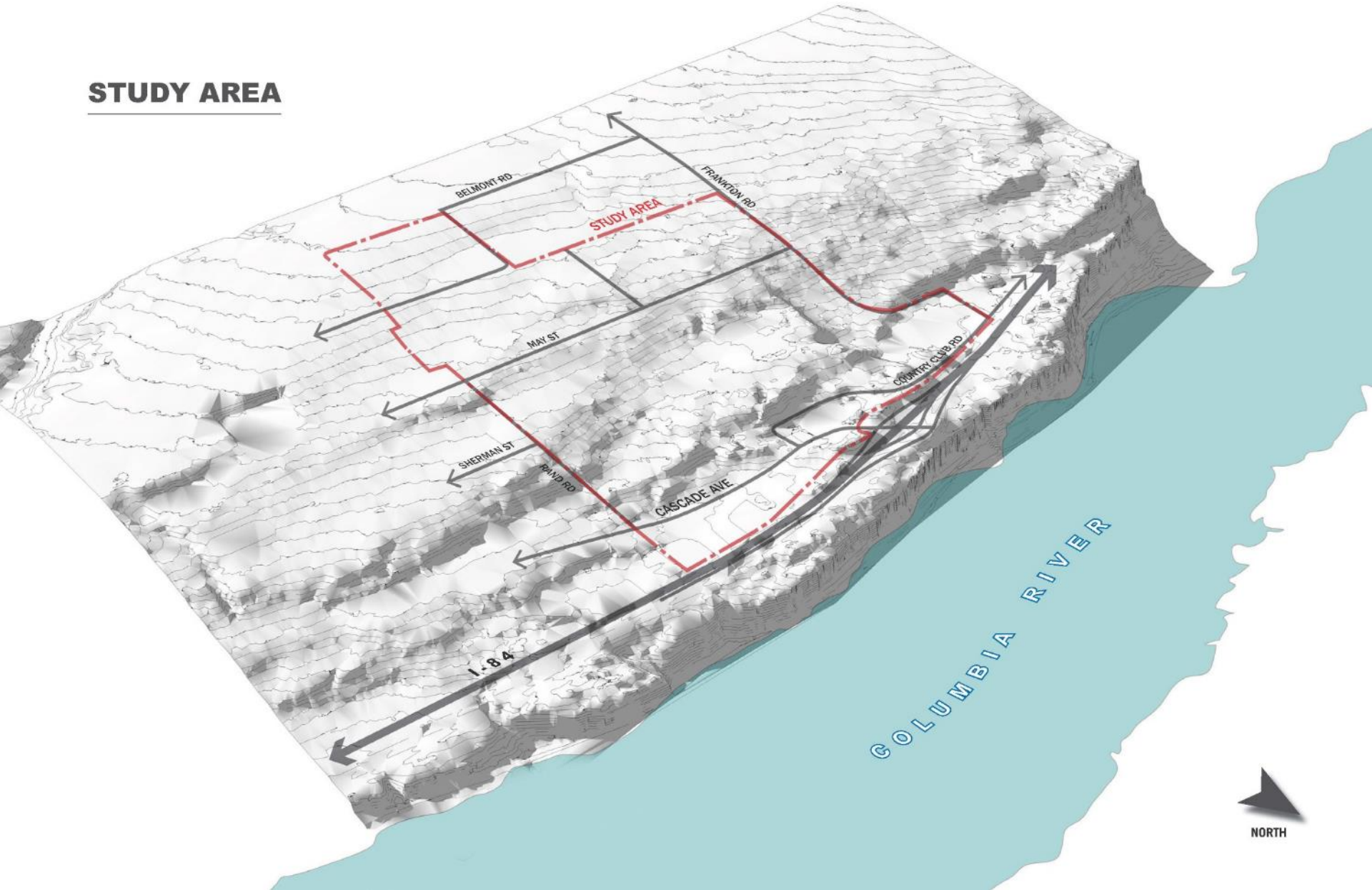


-  2001 Capital Facilities Plan: Planned New Storm Drain
-  Documented "Problem Area"

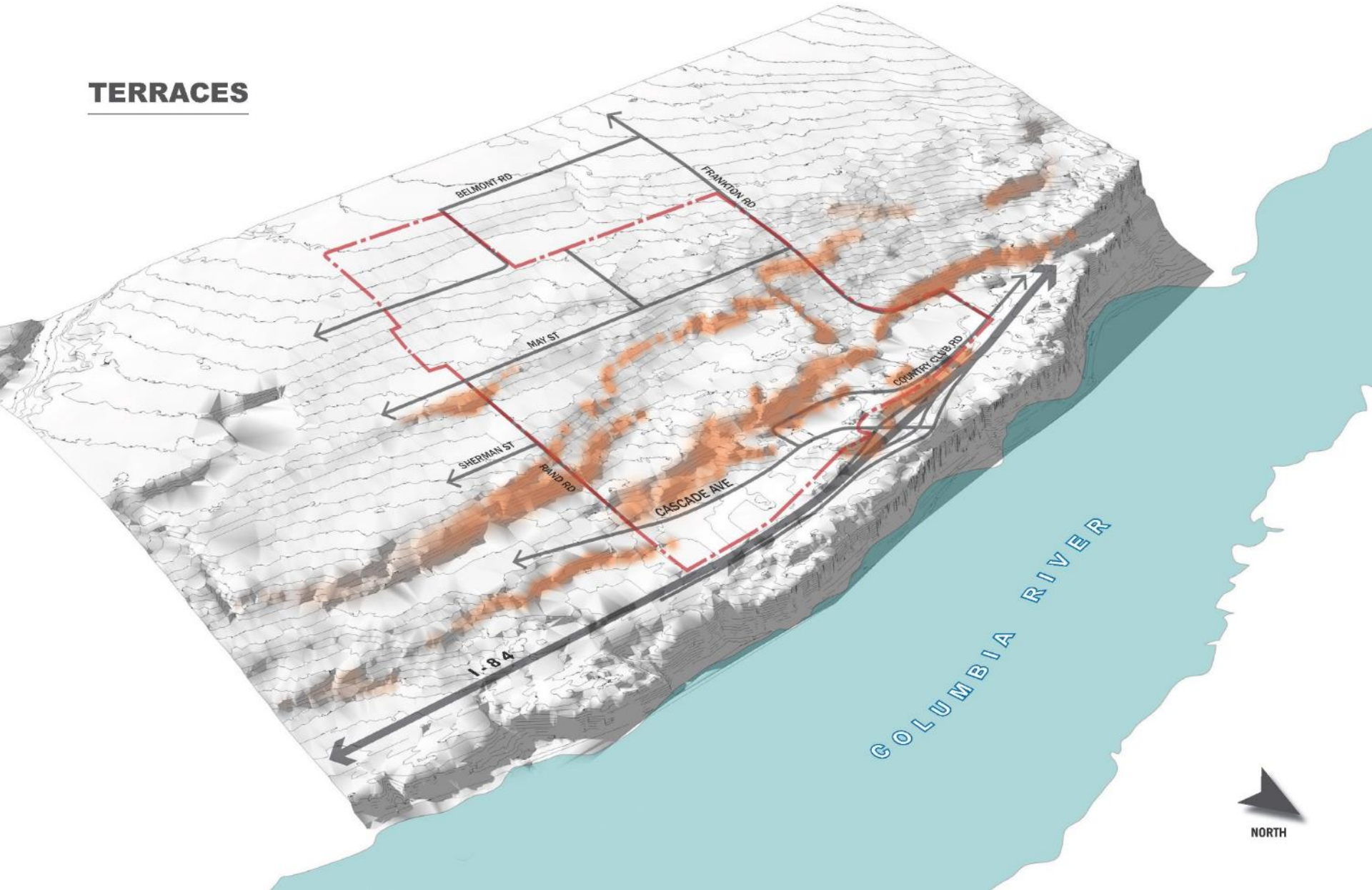
Low Impact Development Approaches



STUDY AREA

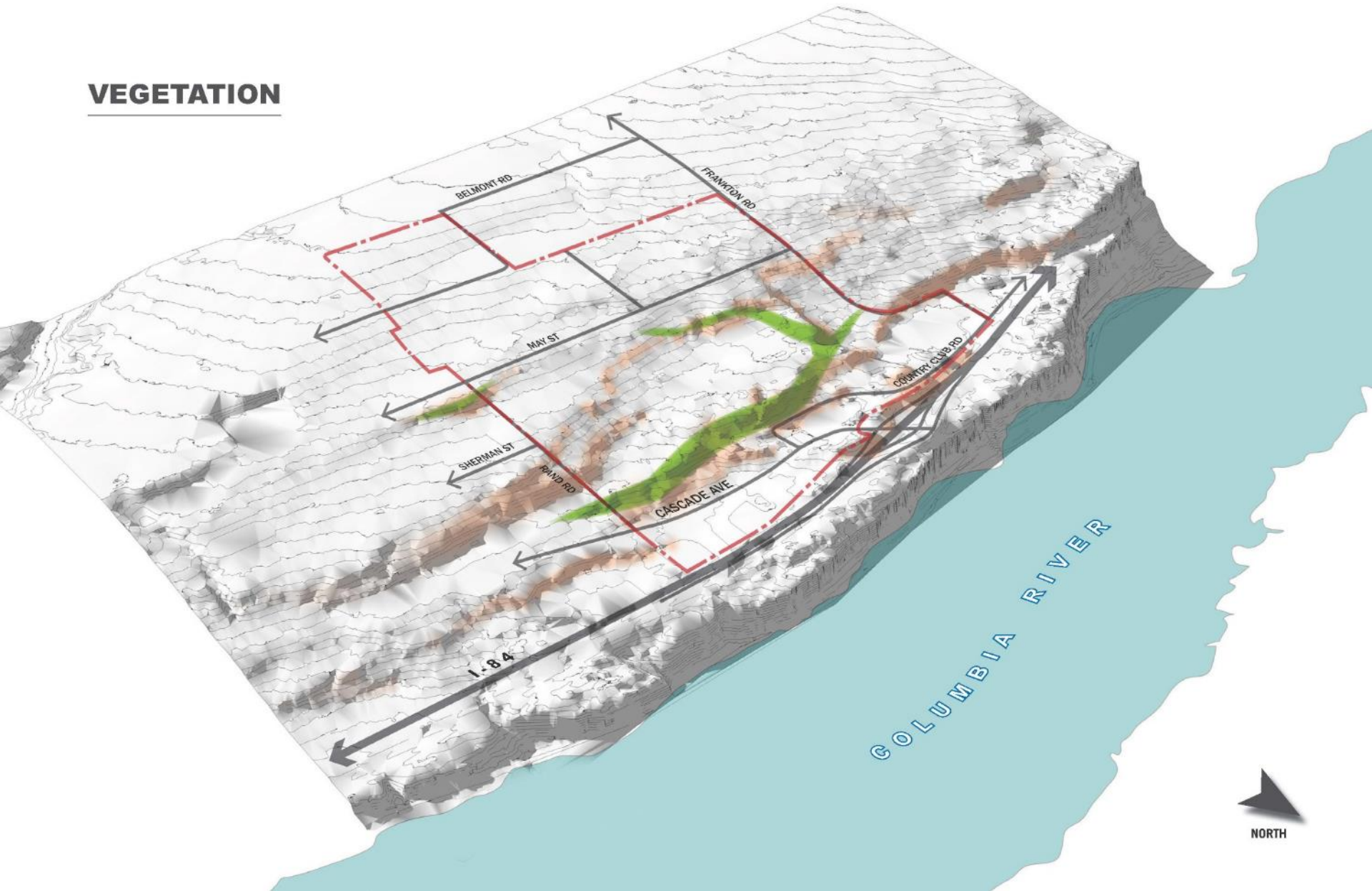


TERRACES

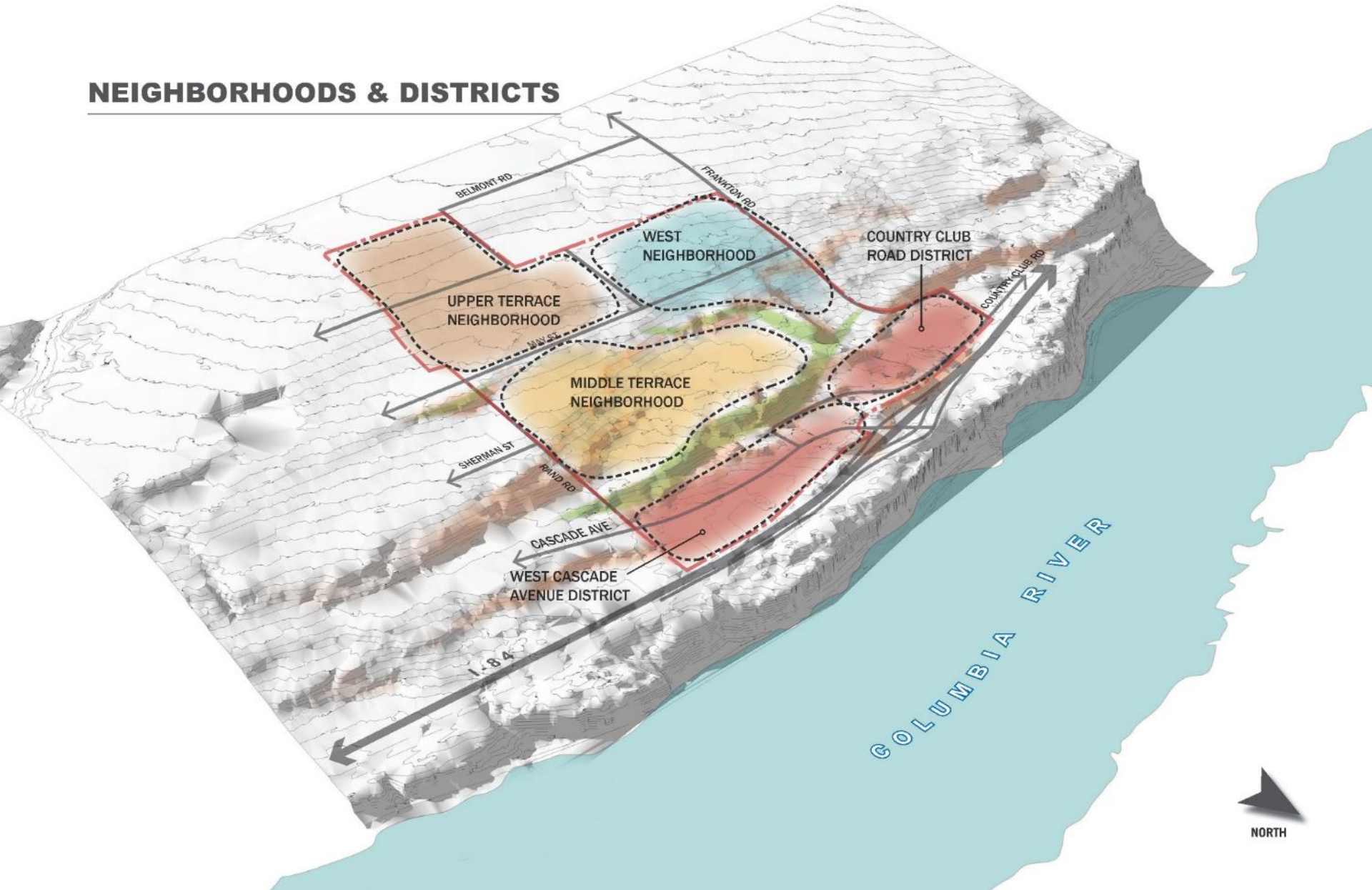


NORTH

VEGETATION

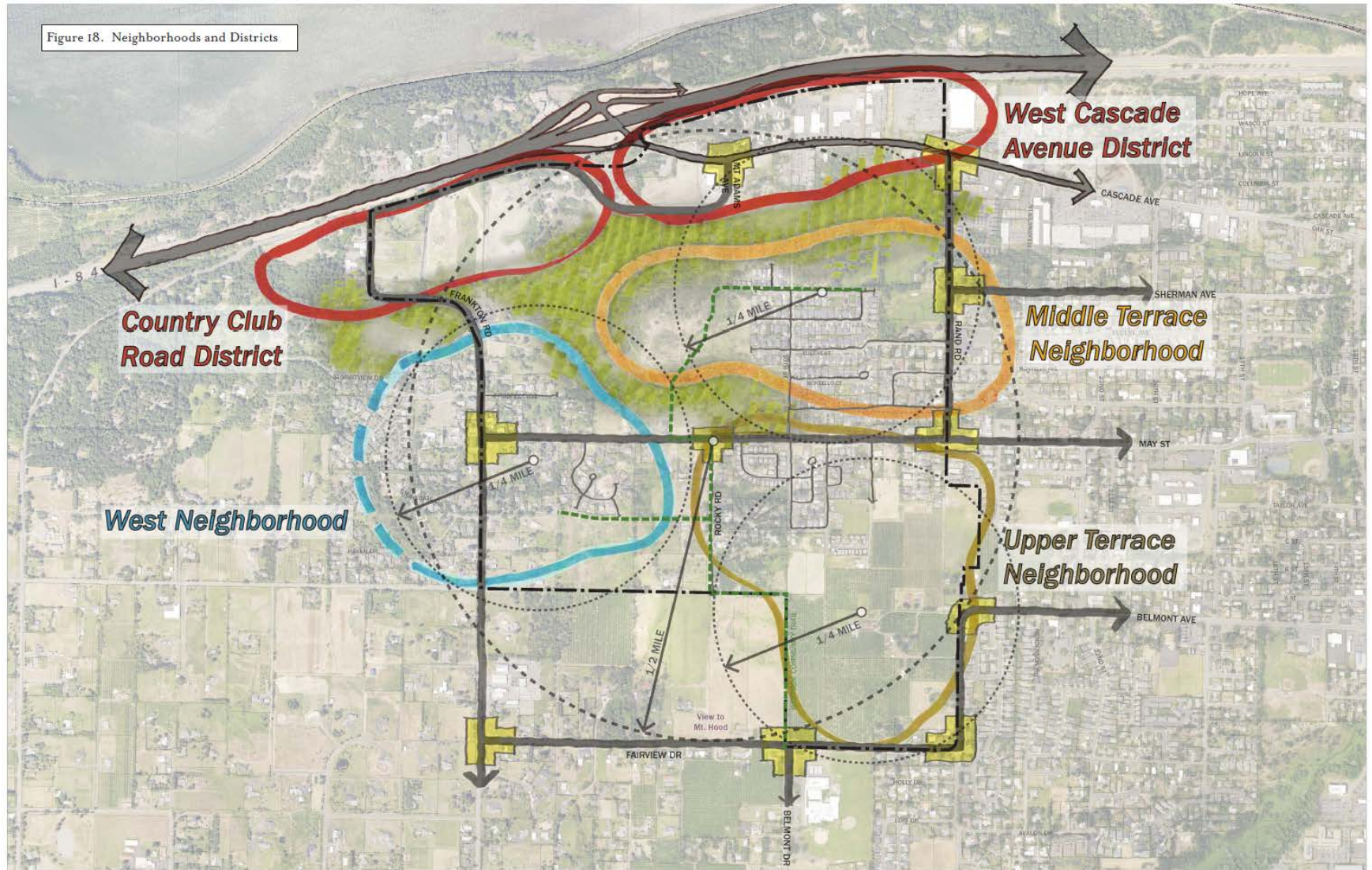


NEIGHBORHOODS & DISTRICTS



Opportunities and Constraints

Figure 18. Neighborhoods and Districts



NEIGHBORHOODS AND DISTRICTS



Smart Growth Principles

Efficient use of Land Resources

Full Utilization of Urban Services

Mixed Use

Transportation Options

Detailed, Human-Scaled Design





Other Relevant Trends and Topics

Promoting affordability by providing a variety of housing

Reducing greenhouse gas emissions through comprehensive planning

Planning for an aging and diverse population

Supporting a healthy community through good community design

Heritage, art and culture as expressed in land use plans

Vision Exercise

