

# Memorandum



3/2/2017

**To:** Project Advisory Committee and Technical Advisory Committee  
**Cc:** Project Management Team  
**From:** Joe Dills and Andrew Parish, Angelo Planning Group  
**Re:** Grading and Street Alignment Information

---

## Purpose and Materials Included

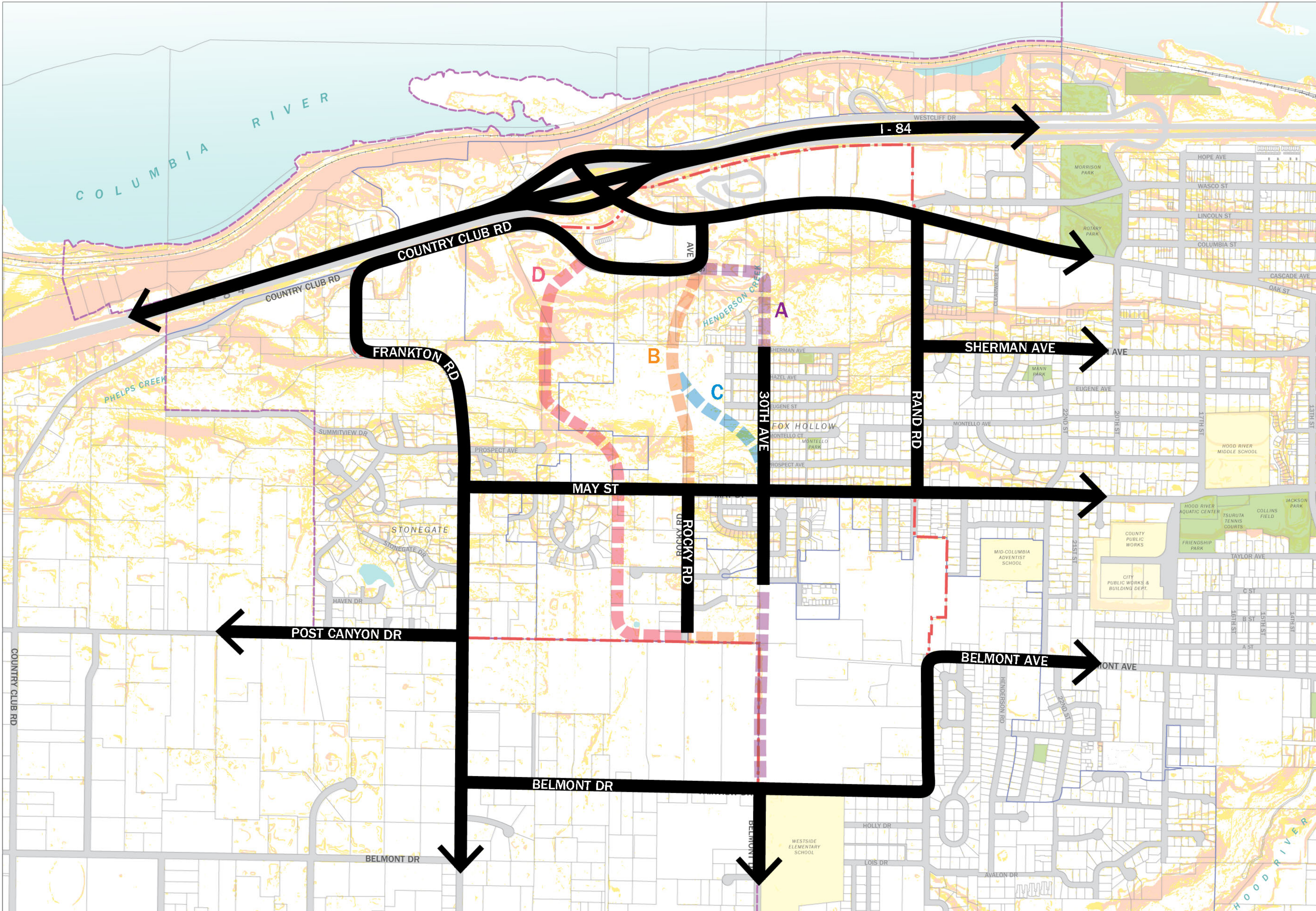
Thank you Committee members and others who participated in the discussion of the Major Streets Framework for the Westside Plan on February 22<sup>nd</sup>. The issue of providing new north-south street connections serving the Westside Area is complex – there are no simple answers. The purpose of this memorandum and the attached technical drawings is to share the background information that was referenced in the Committee meetings. All of this material was reviewed in detail as part of preparing the Alternatives Report. As you know, we closed our initial discussion on February 22<sup>nd</sup> with a plan to continue evaluation of the options, and bring information back to Committee at your next meeting on April 26<sup>th</sup>. We will of course share information with all parties at the upcoming Open House on March 9<sup>th</sup> and the joint work session of the Planning Commission and City Council on March 13<sup>th</sup>.

The technical drawings in this packet include materials submitted to the project team and analysis performed by project consultants through the Alternatives Evaluation work regarding the alignment and grading of the Mt. Adams Extension and other potential roads in the Westside Area. Included in this packet are the following:

- The “Major Streets Framework” map discussed at the February 22 PAC/TAC meetings, which identifies the general alternative alignments A, B, C, and D.
- Four “Proposed Scenarios” drafted by Andy von Flotow and Vista GeoEnvironmental Services showing different alignments of the Mt. Adams Extension as well as a connection southwest from Wine Country Avenue (identified generally as “Alignment D” in the alternatives analysis materials presented at the February 22 meetings).
- An additional illustration from Andy von Flotow and Vista GeoEnvironmental depicting a “one way loop” idea for the Cascade/Wine Country/Mt Adams area.
- Two grading studies (also called “plan and profile” drawings) created by the project team’s civil engineer, David Evans and Associates, to examine the alignments identified as “B” and “C”.

## Background of Transportation Analysis

The starting point for major street connections in the Westside Area is the City’s Transportation System Plan (TSP), which identified the need for a major street connection from roughly Mt. Adams Avenue south to May. As the city grows, this extension is expected to be a critical connectivity improvement in west Hood River that takes a significant amount of traffic from other corridors such as Cascade Avenue, Rand Road, and even 13th street. The TSP did not lay out the precise alignment or design of this connection.



**MAJOR STREET CONNECTIONS**

HOOD RIVER WESTSIDE AREA CONCEPT PLAN

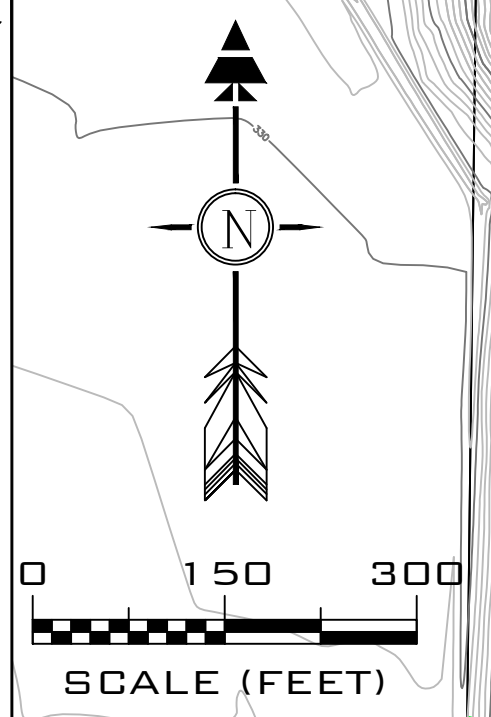
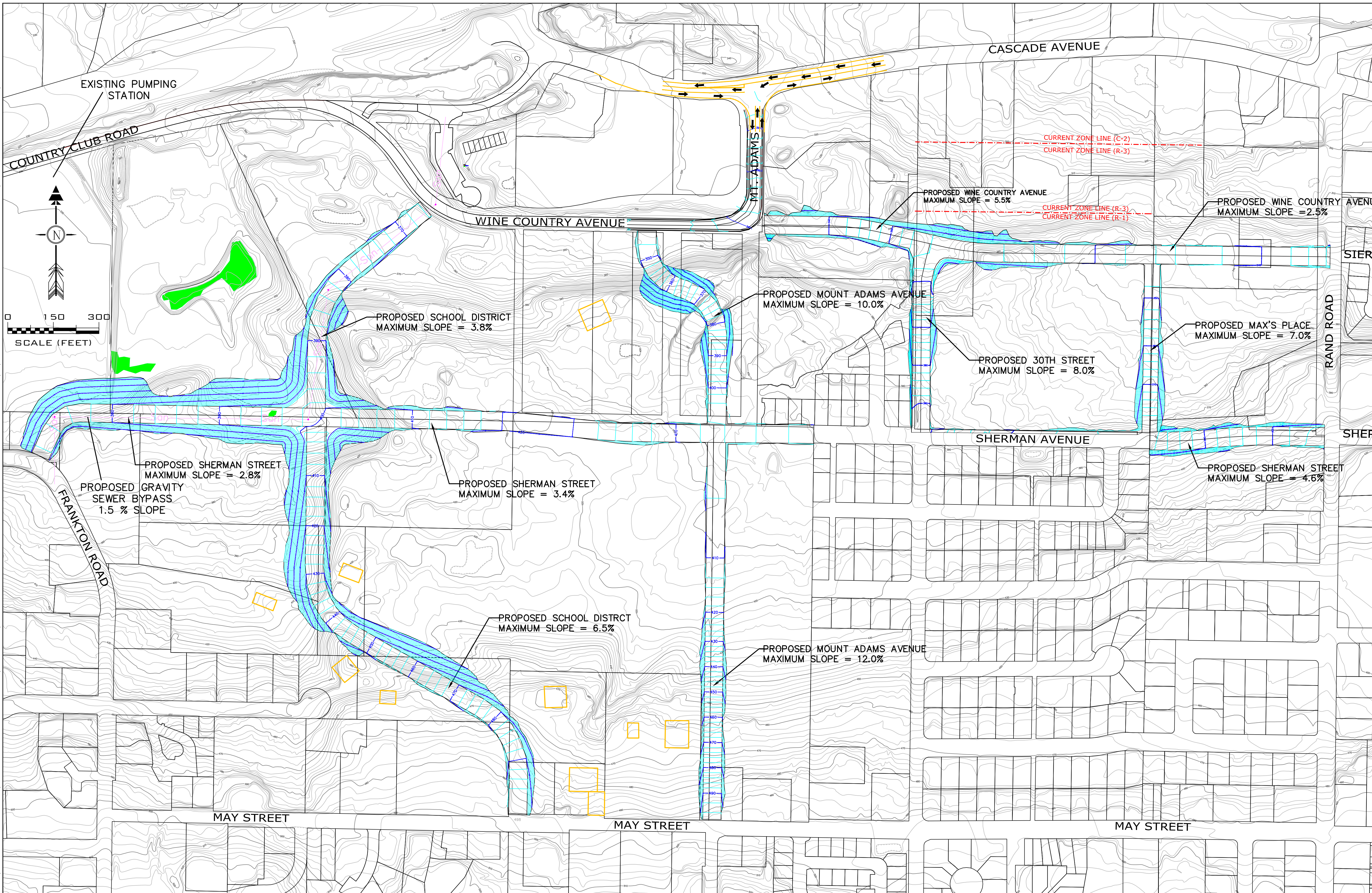
- >25% SLOPES
- >15% SLOPES

- STUDY AREA BOUNDARY
- CITY BOUNDARY
- URBAN GROWTH BOUNDARY





G:\EL HOOD RIVER\VON FLOW ANDY\MT ADAMS CANYON ROAD\AUTOCAD\CONNECTIVITY ROADS - SCENARIO 2.BDWG PLOTTED: 10/5/2016 5:29 PM ON ANSI FULL BLEED D (22.00 X 34.00 INCHES)



**VISTA** GEOENVIRONMENTAL SERVICES  
 489 N 8TH STREET - SUITE 201  
 HOOD RIVER, OREGON 97031  
 (541) 386-6480

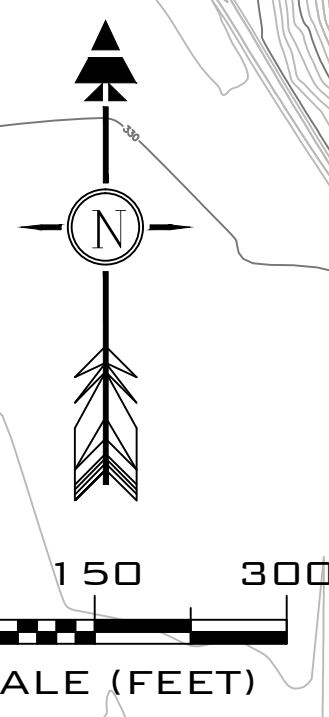
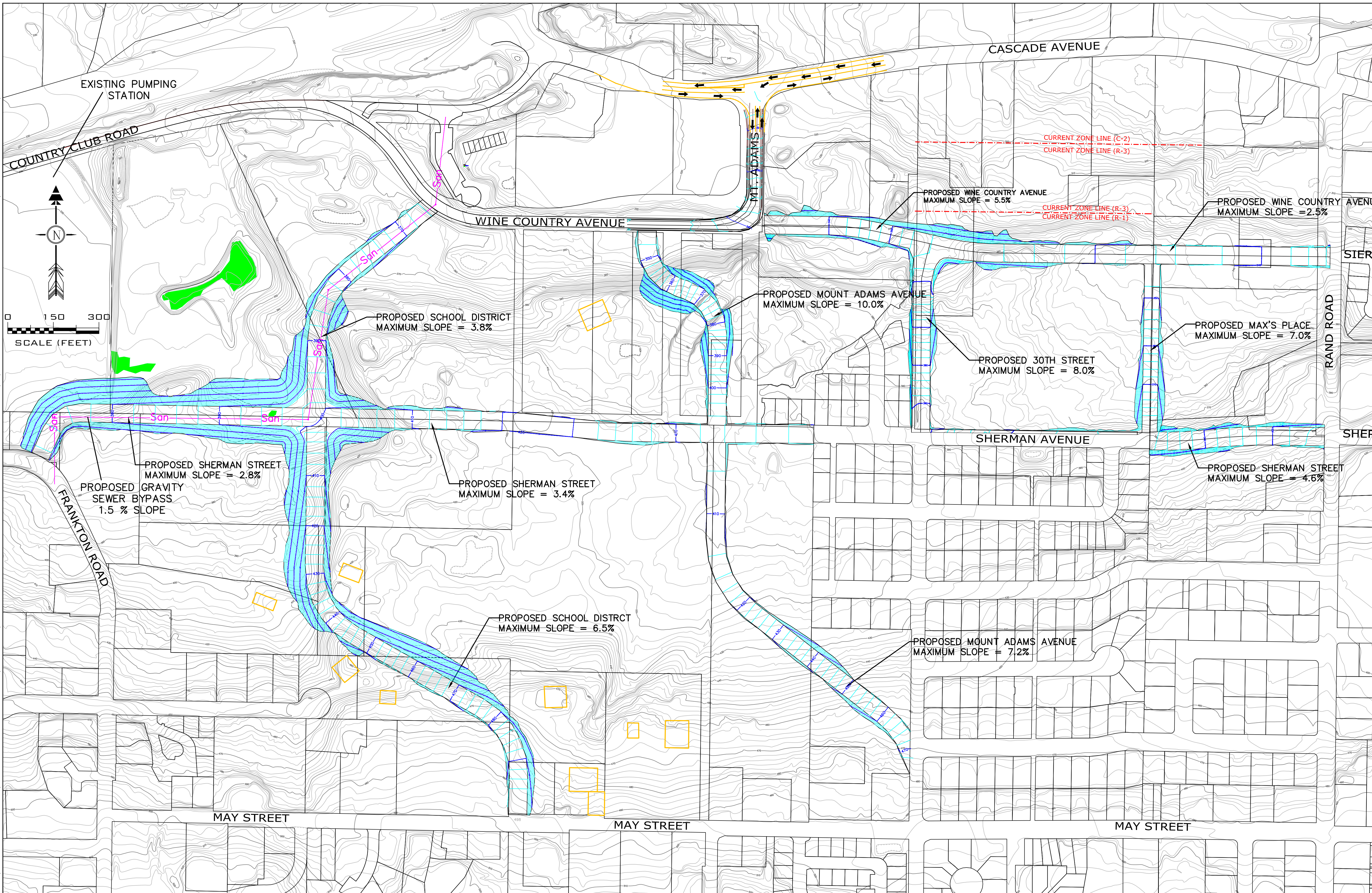
REV	DATE	REVISION DESCRIPTION	DES	DRN	APP

DATE: 10/01/2016

WESTSIDE CONNECTIVITY  
 CITY OF HOOD RIVER, OREGON  
 PLAN VIEW  
 PROPOSED SCENARIO 2

DRAWING NO.  
 1

G:\EL HOOD RIVER\VON FLOW ANDY\MT ADAMS CANYON ROAD\AUTOCAD\CONNECTIVITY ROADS - SCENARIO 3.DWG PLOTTED: 10/5/2016 5:38 PM ON ANSI FULL BLEED D (22.00 X 34.00 INCHES)



**VISTA** GEOENVIRONMENTAL SERVICES  
 489 N 8TH STREET - SUITE 201  
 HOOD RIVER, OREGON 97031  
 (541) 386-6480

REV	DATE	REVISION DESCRIPTION	DES	DRN	APP

DATE: 10/01/2016

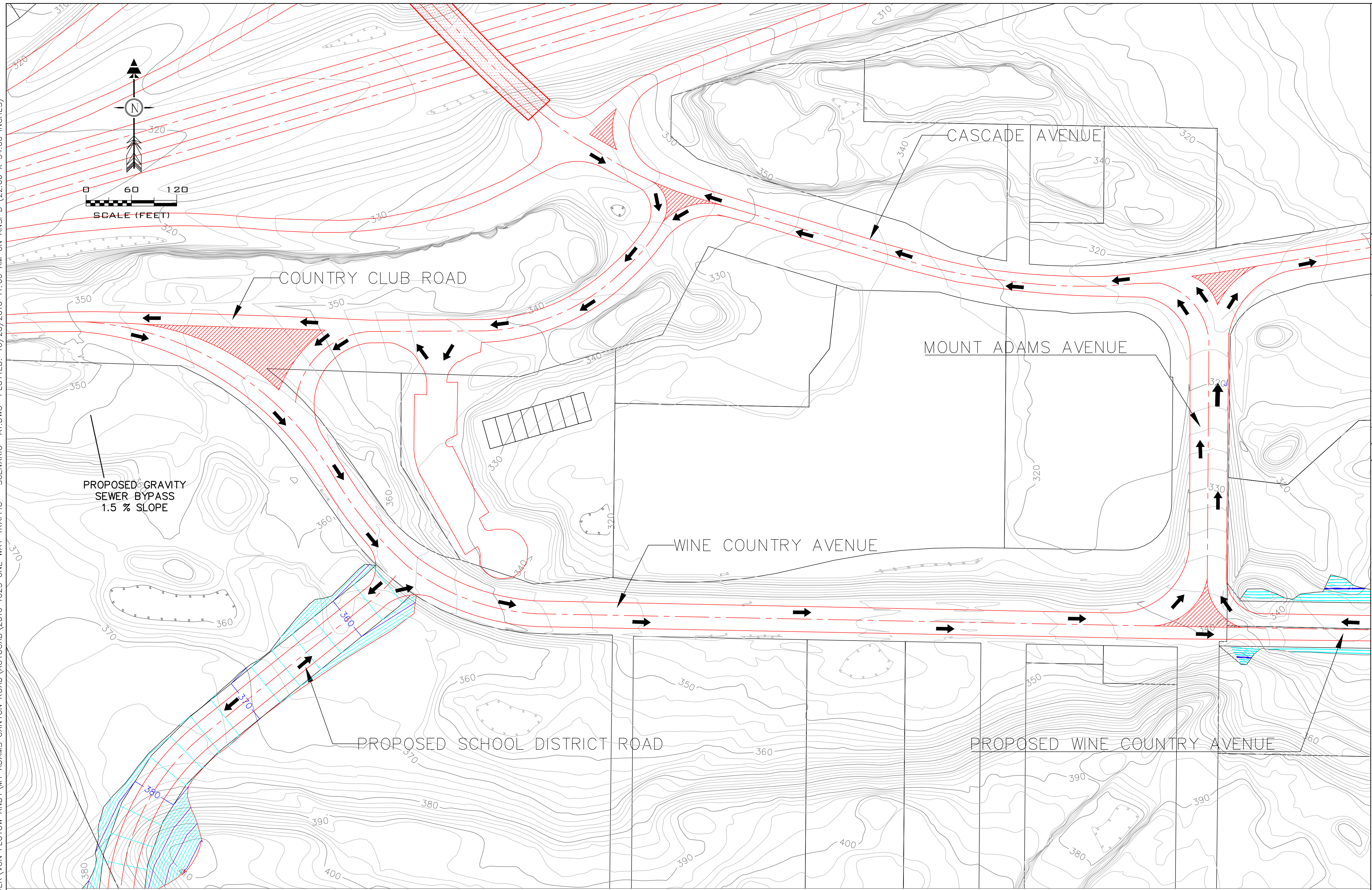
WESTSIDE CONNECTIVITY  
 CITY OF HOOD RIVER, OREGON  
 PLAN VIEW  
 PROPOSED SCENARIO 3

DRAWING NO.  
 1  
 OF 1

16-138



I:\NEL HOOD RIVER\ON FLOW AND\MT ADAMS CANYON ROAD\AUTOCAD\2016 1025 ONE WAY TRAFFIC - SCENARIO A1.DWG PLOTTED: 10/28/2016 11:06 AM ON ANSI D (22.00 X 34.00 INCHES)



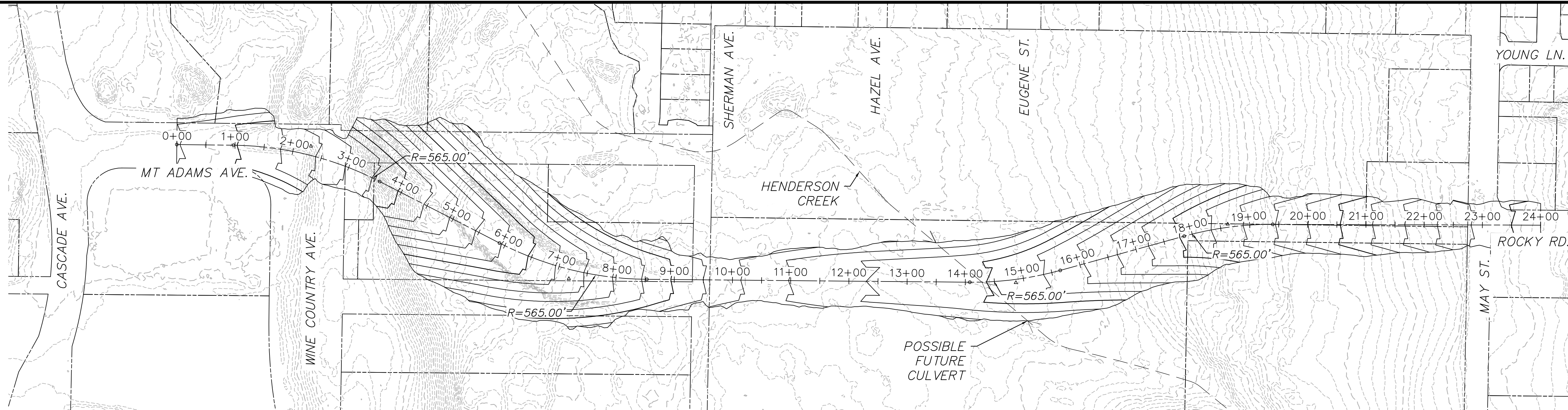
**VISTA** GEOENVIRONMENTAL SERVICES  
 489 N 8TH STREET - SUITE 201  
 HOOD RIVER, OREGON 97031  
 (541) 386-6480

REV	DATE	REVISION DESCRIPTION	DES	DRN	APP

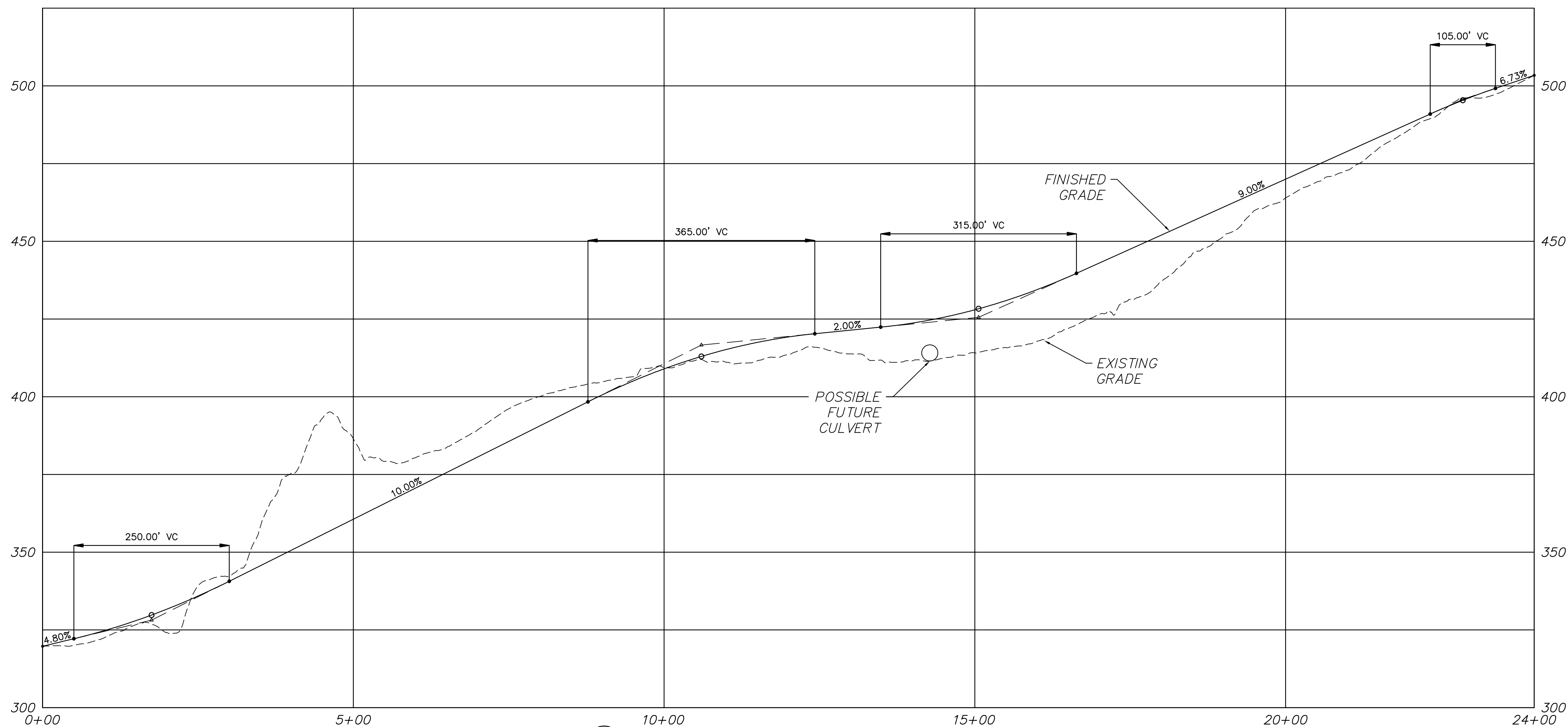
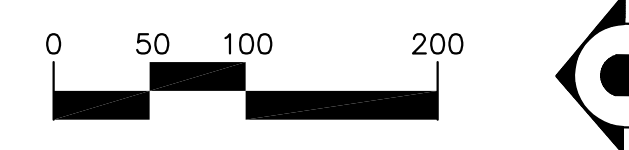
DATE: 10/28/2016

WESTSIDE CONNECTIVITY  
 CITY OF HOOD RIVER, OREGON  
**PLAN VIEW**  
 ONE WAY TRAFFIC CIRCLE

DRAWING NO. 1  
 OF 1



1 MT. ADAMS AVE. - ALIGNMENT B PLAN  
 C1 SCALE: 1" = 100'



2 MT. ADAMS AVE. - ALIGNMENT B PROFILE  
 C1 SCALE: HORIZ.: 1"=100', VERT.: 1"=20'

MT. ADAMS AVE. - ALIGNMENT B PLAN AND PROFILE  
 HOOD RIVER - WEST SIDE AREA  
 CONCEPT PLAN  
 CITY OF HOOD RIVER  
 HOOD RIVER, OREGON

REVISIONS: APPD.

DATE: 02-10-2017  
 DESIGN: SPM  
 DRAWN: SPM  
 CHECKED: SDH  
 REVISION NUMBER: 1

SCALE: AS SHOWN

PROJECT NUMBER:  
 APGI0000-0005

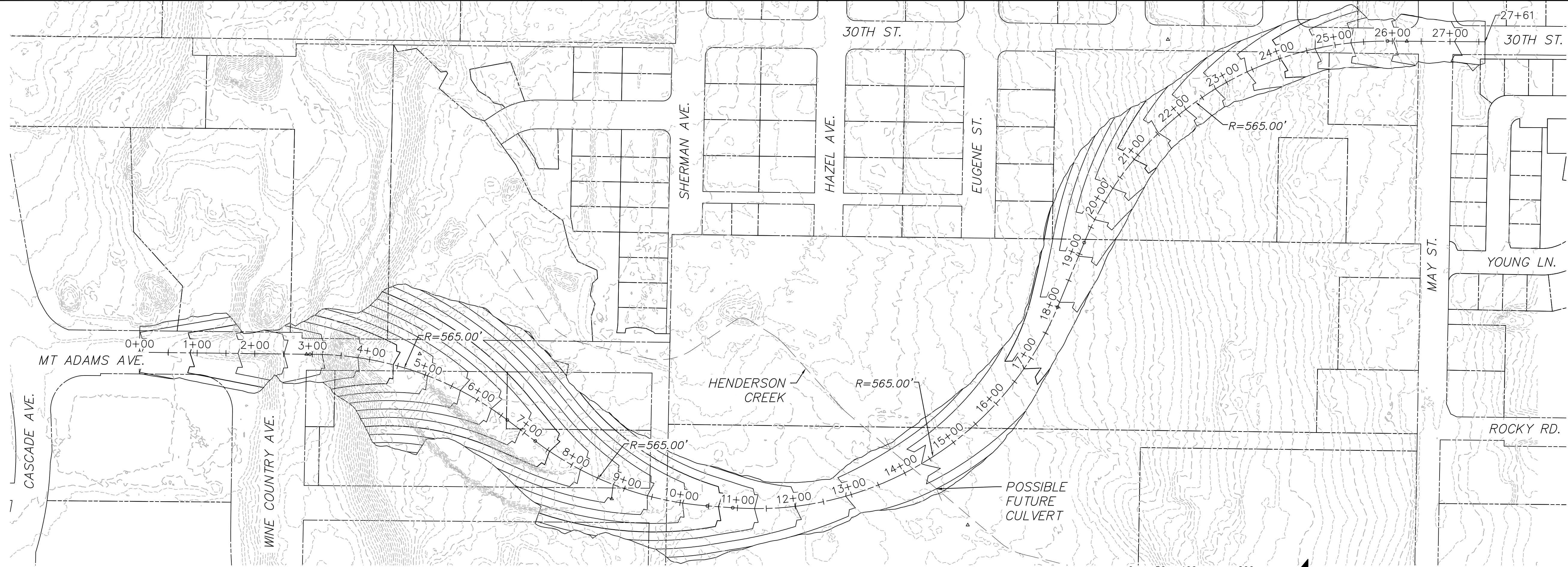
DRAWING FILE:

SHEET NO.

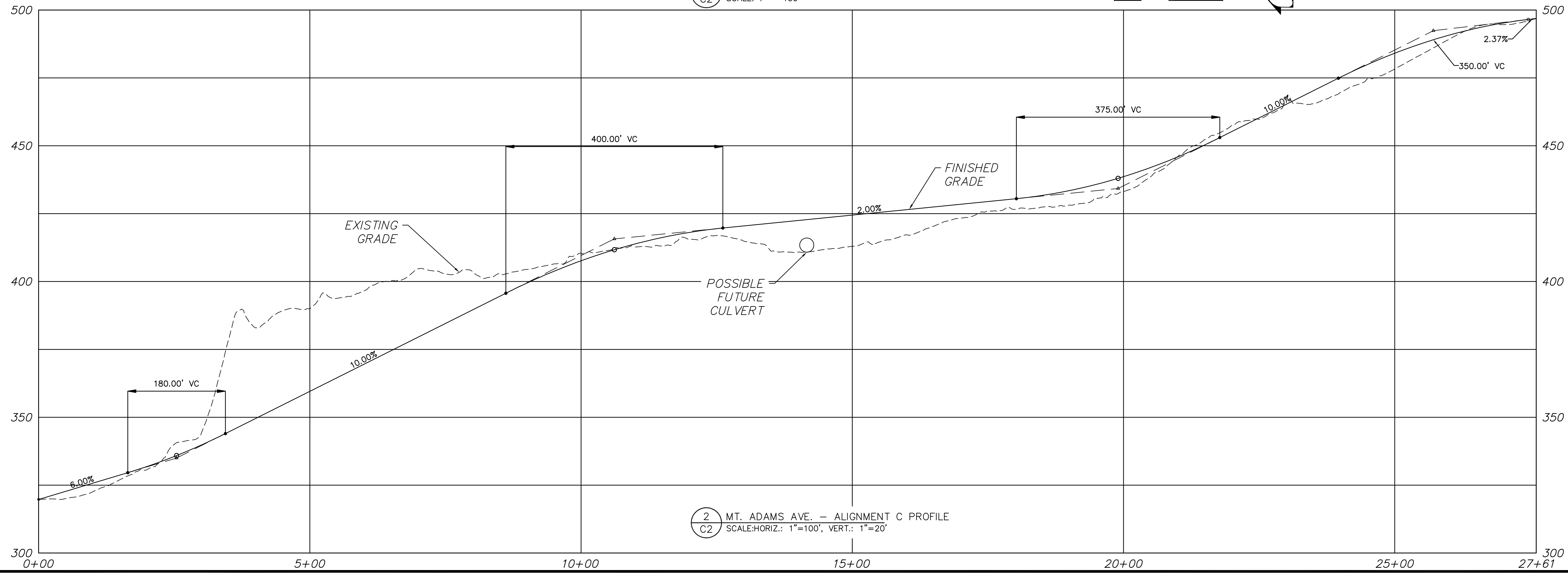
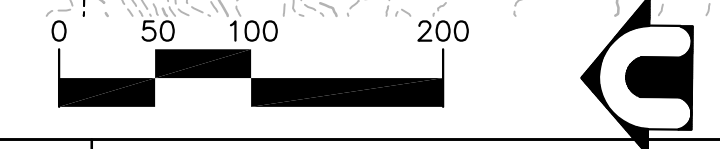
C1



MT. ADAMS AVE. - ALIGNMENT C PLAN AND PROFILE  
**HOOD RIVER - WEST SIDE AREA**  
 CONCEPT PLAN  
 CITY OF HOOD RIVER  
 HOOD RIVER, OREGON



1 MT. ADAMS AVE. - ALIGNMENT C PLAN  
 C2 SCALE: 1" = 100'



2 MT. ADAMS AVE. - ALIGNMENT C PROFILE  
 C2 SCALE: HORIZ.: 1"=100', VERT.: 1"=20'

Plot Date: 2/13/2017 10:31 AM  
 Save Date: 2/13/2017 10:31 AM  
 By: Spara  
 File: P:\A\APG\000005\04\CAD\SHEETS\APG\0005 - Preliminary Plan And Profiles.dwg

REVISIONS: APPD.

DATE: 02-10-2017  
 DESIGN: SPM  
 DRAWN: SPM  
 CHECKED: SDH  
 REVISION NUMBER: 1

SCALE: AS SHOWN

PROJECT NUMBER:  
 APG10000-0005

DRAWING FILE:

SHEET NO.

**C2**